

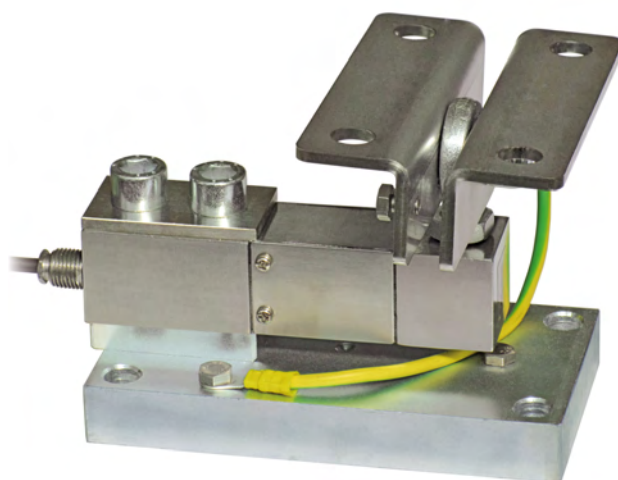
TFPS2000

MOUNTING KIT for SHEAR BEAM load cells

LAUMAS®
ELETTRONICA

Series load cells: FTL - FTK - FTKL - FTP - FT-P - FTZ

Application range from 75 to 2000 kg



MAX STATIC LOAD kg	FOR LOAD CELLS	NET WEIGHT OF MOUNTING KIT (kg)	CODE
2000	FTL - FTK - FTKL - FTP - FT-P - FTZ	2.7	TFPS2000

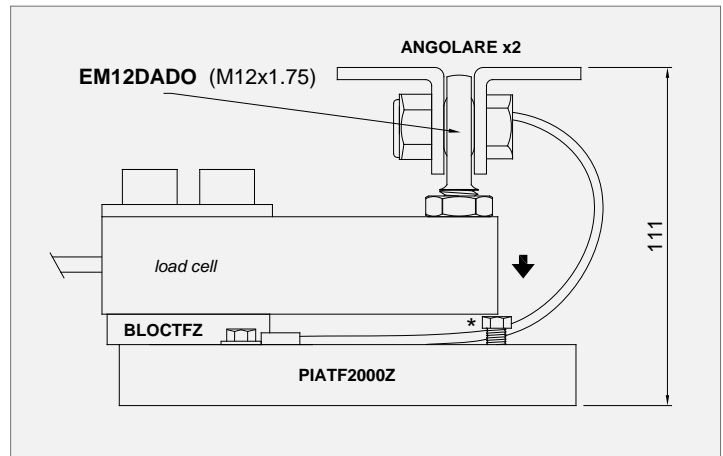
Load cell not included.

DESCRIPTION

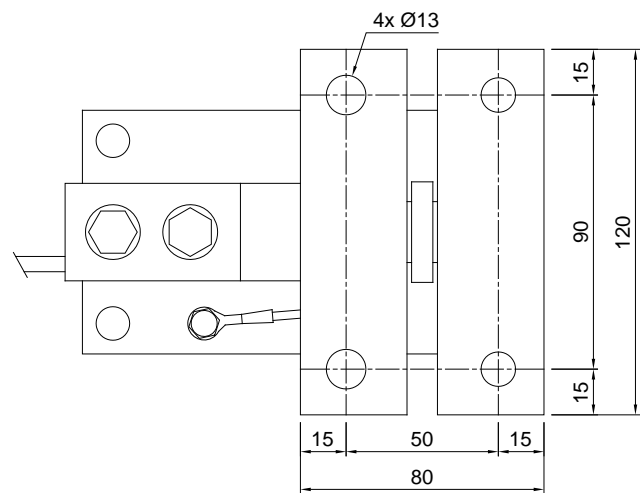
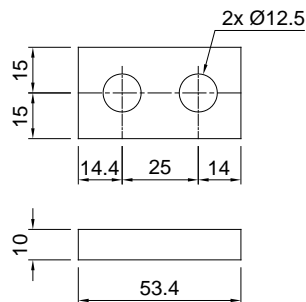
- AISI 304 stainless steel upper plate.
- Lower plate and block in galvanized steel.
- Constraint against lateral forces and anti-tilt by ball-and-socket joint.
- Misalignment compensation of the support plates structure.
- Adjustable height.
- Locking screw to avoid damage during transport and installation.

DIMENSIONS AND TECHNICAL SPECIFICATIONS

- During the transport and installation the lock (*) must touch under the load cell. After installation, move the lock away from the load cell.
- Interconnect the plates to the earthing.
- In case of structure with four-point support, if one-point does not touch the compression joint, you must proceed to insert a shim before fixing the bolts.



BLOCTFZ



PIATF2000Z

