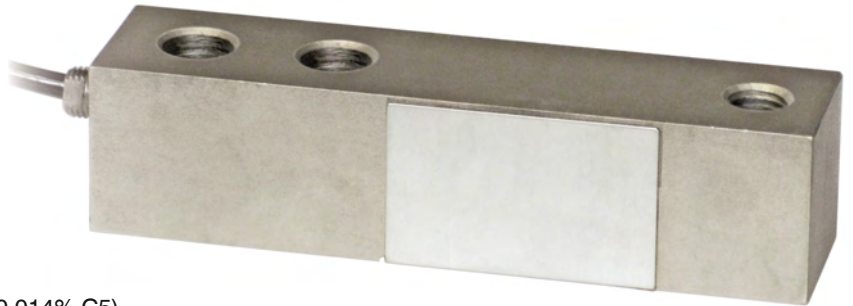




Capacity from 500 kg to 5000 kg



- SPECIAL STEEL
- COMBINED ERROR $\leq \pm 0.02\%$ (0.017% C4; 0.014% C5)
- PROTECTION CLASS IP67

MOUNTING KITS



CAPACITY	kg	ACCURACY CLASS			CERTIFICATIONS				NET WEIGHT OF LOAD CELL (kg)	CODE
		OIML	IECEx	Ex	EAC	NTEP				
500		C3	C4	C5	•	•	•	•	0.8	FTKL500
1000		C3	C4	C5	•	•	•	•	0.8	FTKL1000
1500		C3	C4	C5	•	•	•	•	0.9	FTKL1500
2000		C3	C4	C5	•	•	•	•	0.9	FTKL2000
3000		C3	C4	C5	•	•	•	•	1.7	FTKL3000
5000		C3	C4	C5	•	•	•	•	1.7	FTKL5000

ON REQUEST

CERTIFICATIONS

OIML R60 C3

CERTIFICATIONS ON REQUEST

ATEX II 1GD (zone 0-1-2-20-21-22)

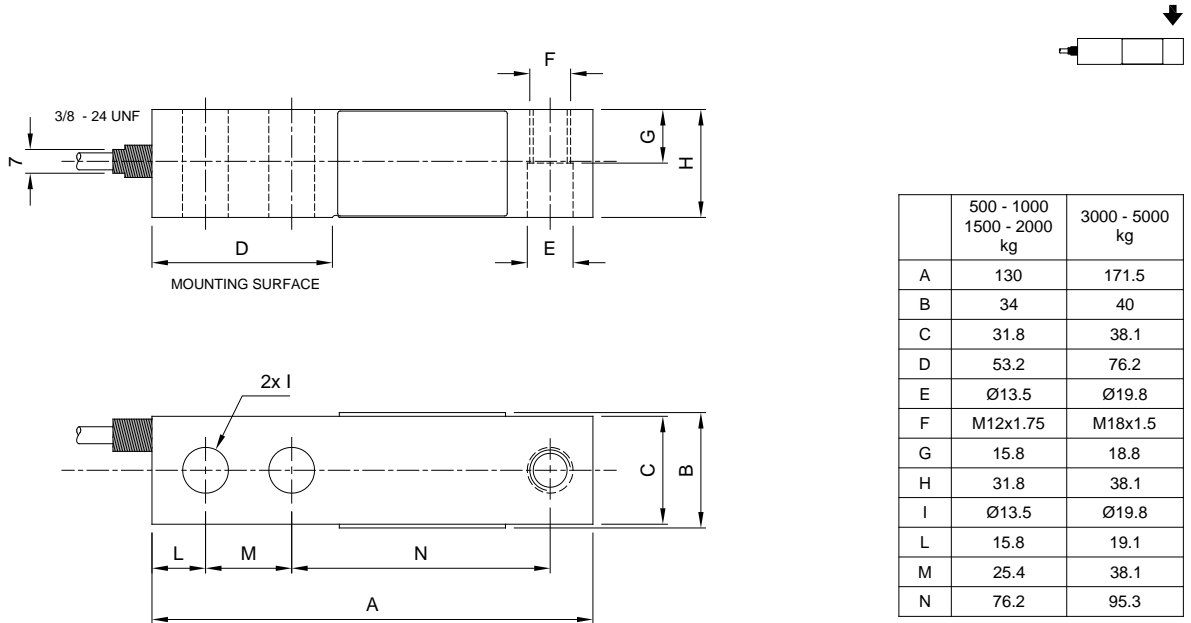
IECEx II 1GD (zone 0-1-2-20-21-22)

OIML R60 C4/C5

Complies with the Eurasian Custom Union regulations (Russia, Belarus, Kazakhstan)

NTEP - compliant to the metrological standards of United States and Canada (capacity from 50 to 500 kg)

DIMENSIONS (mm)

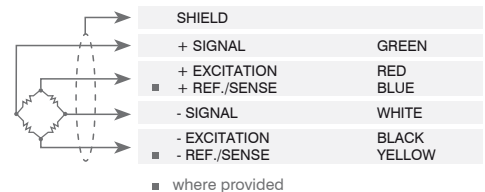


TECHNICAL FEATURES

Material	AISI 420 stainless steel			
	C3 • 3000	C4 • 4000	C5 • 5000	
OIML R60 Accuracy class • Verification intervals	500 - 1000 - 1500 kg 2000 - 3000 - 5000 kg		500 - 1000 kg 1500 - 2000 kg	3000 - 5000 kg
Nominal load (E max)	E max / 10000		E max / 20000	E max / 18000
Minimum verification interval (V min)	≤ ±0.02%	≤ ±0.017%	≤ ±0.014%	
Combined error	IP67			
Protection class	Rated output	3 mV/V ±0.1%	Input resistance	350 Ω ±3.5
	Temperature effect on zero	0.0018% °C	Output resistance	350 Ω ±3.5
	Temperature effect on span	0.0014% °C	Zero balance	≤ ±1%
	Compensated temperature range	-10 °C / +40 °C	Insulation resistance	≥5000 MΩ
	Operating temperature range	-35 °C / +65 °C	Safe overload (% of full scale)	150%
	Creep at nominal load in 30 minutes	0.02%	Ultimate overload (% of full scale)	300%
	Max supply voltage without damage	18 V	Deflection at nominal load	0.4 mm

ELECTRICAL CONNECTIONS

Cable length	6 m
Cable diameter	5 mm
Cores	4/6 x 0.20 mm ²



The Company reserves the right to make changes to the technical data, drawings and images without notice.